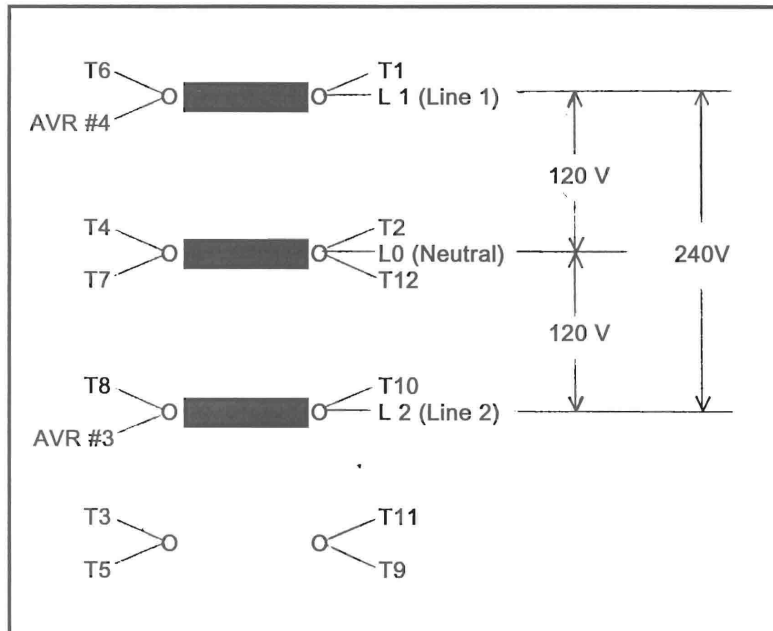




**8 POST LINKBOARD
SINGLE PHASE 240/120 VOLT
Double Delta Connection
With SE350 Voltage Regulator
Reference: Connection Diagram 14000-1038**



VOLTAGE (DOUBLE DELTA)		
Hz	L-L	L-LO
60	200	100
	220	110
	240	120
50	220	110

**280 Frame series, torque link board nuts to 40 to 45 inch pounds.
360 Frame series, torque link board nuts to 18 to 20 foot pounds.**